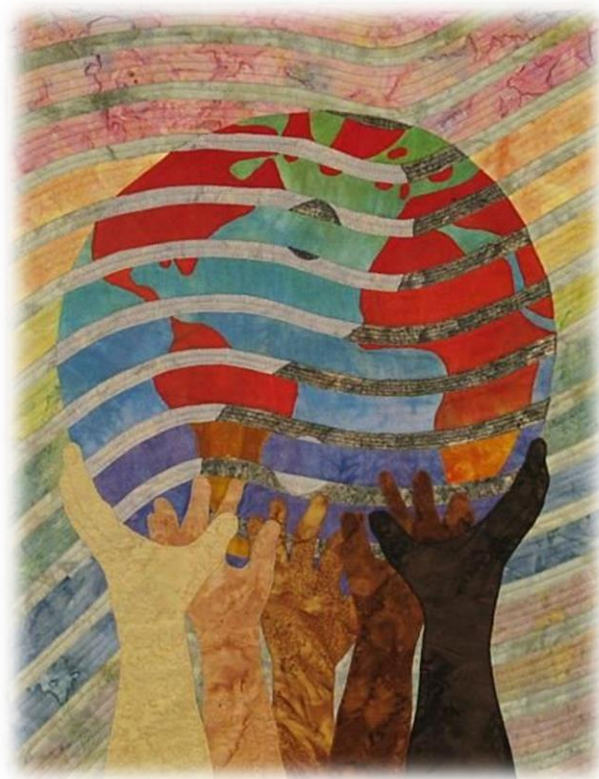


# St. Mark Presbyterian Church



World Communion Sunday  
September 30 & October 1, 2023  
Worship Bulletin

# ORDER OF WORSHIP

## CENTERING PRAYER

*Mwari wedu* (Our God who is), *Musiki wedu* (Our Creator God), *Nyadenga wedu* (Our Heavenly Father), bless us with discomfort at easy answers, half-truths, and superficial relationships. Bless us with anger at injustice, oppression, and exploitation of people. Bless us with tears to shed for those who suffer from pain, rejection, starvation, and war. Bless us with enough foolishness to believe that we can make a difference in this world. *Muzita raBaba, nere Mwanakomana, nere Mweya Mutsvene.* (In the name of the Father, and the Son, and the Holy Spirit.) Amen.

PRELUDE (Sunday Worship)

*Prelude on "Morecambe"*

Brenda Portman

## WELCOME and ANNOUNCEMENTS

## CALL TO WORSHIP

We gather from the west to the east,  
from the south to the north,  
**to celebrate the God of peace**  
**who accompanies us in our acts of peace.**  
This God of peace is with us  
in each and every circumstance around us.  
**We praise God's name! Amen!**

† HYMN

**"In Christ There Is No East or West"**

**Hymnal #318**

## PRAYER OF CONFESSION

**Righteous God, we confess we do not live as your obedient children. We honor you with our words, but we deny you with our actions. We do not pursue the mind of Christ, who took the form of a servant, for we act with selfish ambition. We put our interests before the needs of others. Forgive our arrogance, awaken our hearts to sincere repentance, and enable us to will and to work for your good pleasure, through Jesus Christ, our Lord.** (Silent Confession)

## ASSURANCE OF PARDON

† **SHARING THE PEACE OF CHRIST**

The peace of Christ be with you.  
**And also with you.**

† **GLORY TO GOD**

**Hymnal #582**

## TIME WITH CHILDREN (Sunday Worship)

† HYMN

**"This Is My Song"**

**Hymnal #340**

SCRIPTURE

Matthew 21:23-32

SERMON

**"Two Roads"**

Rev. Dr. Dave Burgess

† **AFFIRMATION OF FAITH**

**Westminster Confession of Faith,  
Shorter Catechism Question One**

Q. What is our chief end?

**A. Our chief end is to glorify God and to enjoy God forever.**

OFFERTORY

Communion Prayer  
Chancel Choir

Allen Pote

## † THE DOXOLOGY

Hymnal #606

### THE CELEBRATION OF HOLY COMMUNION

Invitation to the Table  
Great Prayer of Thanksgiving and the Lord's Prayer  
Words of Institution  
Sharing of the Bread & Cup  
Prayer After Communion

## † HYMN

**“We Are Marching in the Light of God”**

Hymnal #853

V.1 – Marching, V. 2 – Singing, V. 3 - Dancing

## †CHARGE AND BLESSING

## †BENEDICTION RESPONSE

**We Will Walk with God**

Hymnal #742

(Sunday Worship)

## POSTLUDE (Sunday Worship)

*One Lord, One Faith, One Birth*

Douglas F. Wagner

† *You are invited to stand, as you are able*

### UPCOMING EVENTS

#### October

1	World Communion Sunday	10	Go Getter Luncheon, 12 pm
2	Prayer Circle, 9:30 am	15	Equal Exchange/Fairly Traded
3	Men's Bible Study, 7:30 am	15	Fall Festival, 11 am
3	Yoga, 6:30 pm	18	Potluck Dinner & Program, 5 pm
4	Children & Youth Activities, 5 & 6 pm	22	Blood Drive, 8:30 am
5	Chair Exercise, 10 am	25	PW Outing, 11:30 am
6	Friday Bible Study, 9 am	29	Youth & Children's, 11:15 am

## WELCOME TO ST. MARK PRESBYTERIAN CHURCH!

We are pleased to have you join us this morning. Your presence enriches both us and this experience of worship together. It is our prayer this will be a time of challenge and encouragement. Wherever you may be on your faith journey, there is a place for you to participate in our life together here at St. Mark.

**TO OUR GUESTS:** We hope you enjoy your visit today. Whether this is your first visit, or you have been coming to St. Mark and are considering joining the church and you would like to know more about St. Mark, we would be happy to talk with you. For more information, please contact the church office, 636-394-2233.

**TO ALL:** Listening devices are also available and may be picked up from the sound technician in the booth at the back of the sanctuary.

**Devotional Booklets,** *These Days* are available in the lobby at the 'Mark' entrance.

**Please be aware** that, as St. Mark works to increase safety and security, all doors to the building are locked Sunday morning once worship has begun. Those who arrive late should approach the 'Mark' door and will be admitted by a member of the Security Team.

**Flowers in the Sanctuary** are donated by Robyn Mikes. "Remembering Denny on our Anniversary".

**TO MEMBERS:** Please wear your NAMETAG at church. Don't have one? Stop by the church office where you will find a form to fill out in the "Name Badge" mailbox.

**WAYS TO GIVE:** There are several convenient and easy ways to contribute to St. Mark:

**In-person:** During Sunday Worship Service

**Mail:** Please make check out to St. Mark Presbyterian Church and send to St. Mark Presbyterian Church, 601 Claymont Drive, Ballwin, MO 63011

**Online:** To donate, use the **QR Code** here to be directed to our giving page on [discoverstmark.org](https://discoverstmark.org).



## SEPTEMBER WORSHIP ATTENDANCE

	Saturday	Sunday	Sunday	Total Attendance
		In Person	Online	
Sept. 2 & 3	16	100	89	205
Sept. 10	--	187	99	286
Sept. 16 & 17	14	126	105	245
Sept. 23 & 24	11	137	81	229

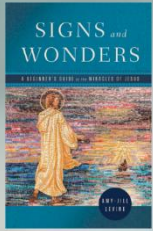
## PEACE AND GLOBAL WITNESS OFFERING

It's appropriate that we honor World Communion Sunday by participating in the Peace and Global Witness Offering. We celebrate our connection with Christians around the world, "no matter the language, gathering place, number of people or country." But the invitation Christ offers is more than just to share "bread and cup", as stated by Bryce Wiebe, Director, Special Offerings and Appeals of PCUSA. We are invited to engage in active peacemaking in local communities and others beyond.

By supporting this offering, we signal our participation in that invitation and support local initiatives through the Presbyterian Children's Home and Services and St. Martin's Peace Meal.



## ADULT CHRISTIAN EDUCATION AT ST. MARK



### Bible Study Fridays 9:00 am

### FRIDAY BIBLE STUDY

Join us Friday mornings,  
October 6<sup>th</sup>,  
13<sup>th</sup>, 20<sup>th</sup>, and

27<sup>th</sup> as we continue taking a closer look at some of Jesus' miracles. We will be using the book and accompanying videos to Amy-Jill Levine's study "Signs and Wonders". You can buy the book if you desire but it is not necessary though we will be drawing from the reading for parts of the discussion. If you have any questions, contact pastor MP or [mpanco@discoverstmark.org](mailto:mpanco@discoverstmark.org) or call the church office.

### ST. MARK MEN'S BIBLE STUDY

The men's bible study meets in room 102 every Tuesday at 7:30 am. We are currently studying the Lord's Prayer using Adam Hamilton's book, "The Lord's Prayer, The Meaning and Prayer Jesus Taught". All men are welcome! You may contact Bruce Cranston for more information.

## WHAT'S HAPPENING WITH CHILDREN'S MINISTRY

### CHILDREN'S SUNDAY SCHOOL

Sunday school for children PreK - 5<sup>th</sup> grade takes place during Sunday worship, immediately following the Children's Message.

### NURSERY

Nursery Care, for ages 0 – 2 years, is available Sunday mornings from 8:30 am - 11:00 am

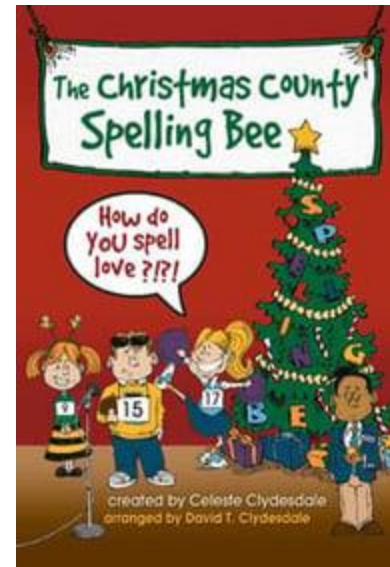
### SUNDAY SCHOOL SIGN IN!

Please be sure to sign in your student(s) for Sunday School! Parents will receive a card after Time With Children with a QR code for access to the sign in. We ask that you have your student(s) registered so that we can contact you via text in the event that you are needed.

## WEDNESDAY CHILDREN'S CHOIR!

Join us for Pre-K choir (5:00 -5:25 pm) and Elementary choir (5:30-6:30 pm)!

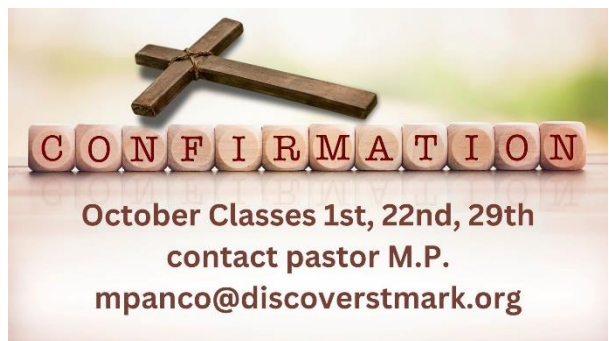
Every week is filled with curriculum-based, music, drama, lessons, choreography, games and snack time! Our Musical this year is called "Christmas County Spelling Bee" and will be presented on December 3 @ 4 pm. For more information, contact [lgilliland@discoverstmark.org](mailto:lgilliland@discoverstmark.org).



## WHAT'S HAPPENING WITH YOUTH



Youth 6<sup>th</sup> grade and up meet Wednesdays from 6:00 – 7:00 pm for food, fun, fellowship, and faith! If you have any questions, contact pastor MP [mpanco@discoverstmark.org](mailto:mpanco@discoverstmark.org) or call the church office.



If you have a youth 7<sup>th</sup> grade or older who would like to explore more about what it means to be a Christian, this is the place! Students will meet weekly along with their mentors and talk about their faith and what they believe about Jesus, religion, the church, and more! Never too late to join in!



## ALL YOUTH • CHILDREN • FAMILIES ARE INVITED TO ECKERT'S FUN FARM IN MILLSTADT!



The Youth and Children's Ministries Committees are teaming up for an afternoon of fun at Eckert's – including apple picking! Lunch will be provided at the church before we leave. We will leave from the church and return to the church. Youth - bring money for anything you want to buy. RSVP to Pastor MP or Latisha Gilliland.

**Youth Ensemble Rehearsal Schedule**

All rehearsals take place from  
11:15 am - 12:15 pm on the  
following dates:

October 1, 8, 22  
November 5, 12  
December 3, 10

## MISSION AT ST. MARK

### OCTOBER FOOD PANTRY MOST WANTED

- Dinner "Helpers"
- Fruit
- Baking Mixes
- Baking Items – Sugar, Flour, Oil, Shortening
- Women's Incontinence Products \*



All year long, we collect food and hygiene items for Circle of Concern and Isaiah 58 Ministries

\*Non-food products cannot be purchased with food stamps. Please place donations on the table in the Pastors' hallway.

## EQUAL EXCHANGE / FAIRLY TRADED IN THE NARTHEX



Check out the products available for purchase on Sunday October 15th. Let us know if there are any items that you would like to see more of or less of in our offerings.

St. Mark supports this mission to build long-term trade partnerships that are economically just and environmentally sustainable, and to foster mutually beneficial relationships between small farmers and consumers (that's us!). *Cash, Credit, Debit, Tap accepted.*



**Presbyterian Children's  
Homes and Services<sup>SM</sup>**

The Presbyterian Children's Homes and Services annual fundraising luncheon is Thursday October 26<sup>th</sup> at Noon at Piazza Messina in Cottleville. Please contact Pam Ladley if you would like to join other St. Mark members at the "Hope Grows Here" event for this longstanding mission partner.



New and gently used clean winter coats and clothing are needed for men, women, and kids, all sizes, and styles.

Many people in our region lack enough warm clothing to stay protected throughout winter. Our mission partners will ensure someone in need receives your gift of warmth!

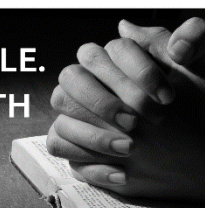
## St. Mark Prayer Circle

**Mondays at 9:30 am, Room 104**

Everyone is Welcome

If you can't join us, please pick up a Prayer List at the Welcome Center on Sunday or the Prayer Circle mailbox in the church office

**LIFE IS FRAGILE.  
HANDLE WITH  
PRAYER**



We pray for our congregants, their family & friends, the community, our nation, and the world.

## POTLUCK DINNER & PROGRAM, OCTOBER 18

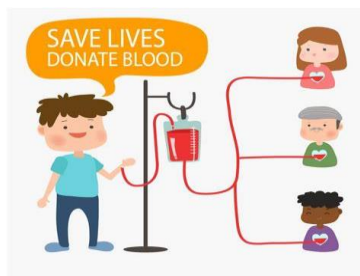
Featuring Jed  
Koball, PCUSA  
Mission  
Co-Worker.  
Rev. Jed Koball  
assists the Peru  
Joining Hands  
Network (Red



Uniendo Manos Peru), which is focused on environmental contamination from the mining industry, the growing water crisis due to global warming, and trade policies that disadvantage many Peruvians. To learn more, go to [Presbyterian Mission Agency A Letter from Jed and Jenny Koball, serving in Peru Fall 2023 | Presbyterian Mission Agency](#). St. Mark supports several PCUSA mission co-workers in Peru through Christmas Alternatives. (Jed & Jenny Koball, and Chenoa Stock).

## ST. MARK BLOOD DRIVE, OCT. 22, 8:30 AM – 1:30 PM

Just one blood donation  
can help save up to three  
(3) lives! For years St.  
Mark has participated in  
this very valuable



community service. For donors who regularly give blood, please add this date and time to your schedule by signing up today. For members & community residents who have been thinking about giving for the first time, let this October 22nd be the beginning of a new habit in your life. Sign up at

<http://www.redcrossblood.org/Donate/Blood> and enter: Saintmarkpres.

## Go Getters Luncheon October 10 @ 12 pm

THE LUNCHEON WILL BE HELD AT EL SALTO MEXICAN  
RESTAURANT, 955 CHESTERFIELD CENTER (NEAR THE  
CHESTERFIELD MALL).

PLEASE INVITE A FRIEND AND PLAN TO JOIN US!

LET JAN GRAVES OR JUDY RICHARDSON KNOW OF YOUR PLANS  
TO ATTEND.

## WHAT'S HAPPENING WITH PRESBYTERIAN WOMEN

### On the Road with PW...

Wednesday,

October 25, 2023

Our Destination:



ST. LOUIS  
**KAPLAN FELDMAN  
HOLOCAUST MUSEUM**  
*In honor of the survivors and the memory of the victims*



Since 1995, the St. Louis Kaplan Feldman Holocaust Museum has been dedicated to fulfilling its mission:

*Through the lessons of the Holocaust, we inspire all people to confront hatred, promote human dignity and prevent genocide.*

Meet at St. Mark at 11:30 a.m. Wednesday, October 25, to carpool to lunch and then to the museum for our 1:30 tour followed by a survivor sharing the story of her experience. The cost for the museum tour/speaker is \$10.00. Lunch plans TBA. **To reserve your place for the tour, please sign up at the PW Table in the Narthex.** You may meet the group at the Museum at 1:15 if lunch doesn't fit in your schedule on the 25th.

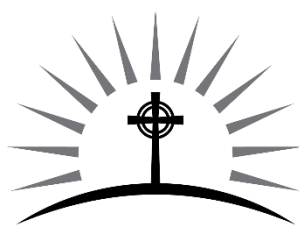


### CALLING ALL ANGELS!

It's that time again! The Christmas Boutique and Angel Street Café are just around the corner, November 7 & 8. Presbyterian Women ask for your help and there are so many ways to help!! You can

make chicken salad, bean or broccoli soup, bake specialty desserts, pies, cakes, or brownies. We also need help with set up and clean up. Of course, you should come by to shop til you drop, bring a friend to lunch, and then come back for supper! Sign up sheets are on the PW table in the Narthex. We appreciate your willingness to be an angel!!

*Pastor:* Rev. Dr. J. David Burgess  
*Associate Pastor:* Rev. MP Panco  
*Parish Associate:* Rev. Carol DeVaughan  
*Dir. of Children's Ministry:* Latisha Gilliland  
*Dir. of Claymont Preschool:* Susan Talley



ST. MARK

601 Claymont Drive  
Ballwin, MO 63011  
(636)394-2233  
[discoverstmark.org](http://discoverstmark.org)

*Dir. of Music:* Ethan Forte  
*Saturday Musician:* Mark Reynoso  
*Sunday Accompanist & Organist:* Jee-Hye Lee  
*Special Music:* Chancel Choir  
*Sunday Liturgist:* Ella Melter