



January 21, 2024
Worship Bulletin

ORDER OF WORSHIP

CENTERING PRAYER

J. Birch, www.faithandworship.com

Your love, which breathed this world into being, established a covenant people,
brought them out of captivity and into a promised land. Hallelujah!
Your love, which, from the moment of our birth, has known and called us by name
from out of this world's slavery into the kingdom of God. Hallelujah!
Your love, poured into the heart of Jesus who endured the nails of our sin,
defeated death to rise again, and causes our hearts to sing Hallelujah!

PRELUDE

Sing to God

Lani Smith

WELCOME AND ANNOUNCEMENTS

CALL TO WORSHIP

Psalm 25

Make me to know your ways,
O Lord; teach me your paths.
**Lead us in your truth, and teach us,
for you are the God of our salvation.**
Be mindful of your mercy, O LORD, and of your
steadfast love, for they have been from old.
**Good and upright is the LORD;
therefore, God instructs sinners in the way.**
God leads the humble in what is right,
and teaches the humble the way.
**All the paths of the LORD are steadfast love
and faithfulness, for those who keep
God's covenant and God's decrees.**

† HYMN

"My Hope Is Built on Nothing Less"

Hymnal #353

PRAYER OF CONFESSION

**Redeeming God, we confess we do not love you with our whole heart, and we do not
love our neighbors as we ought; we stray from your commandments and forget your
covenants. Do not remember our sins, but forgive our iniquities, that we may fix our
eyes on you and sin no more. We continue to pray in Jesus' name. (Silent Confession)**

ASSURANCE OF PARDON

† SHARING THE PEACE OF CHRIST

The peace of Christ be with you.
And also with you.

† GLORY BE TO THE FATHER

Hymnal #581

TIME WITH CHILDREN

† HYMN

"Spirit, Spirit of Gentleness"

Hymnal #291

SCRIPTURE

Jeremiah 31:31-34

SERMON

"Lies My Preacher Told Me: Out with the Old"

Rev. Dr. Dave Burgess

† AFFIRMATION OF FAITH

Apostles' Creed

I believe in God, the Father almighty, Maker of heaven and earth, and in Jesus Christ his only Son, our Lord; who was conceived by the Holy Ghost, born of the Virgin Mary, suffered under Pontius Pilate, was crucified, dead, and buried; he descended into hell; the third day he rose again from the dead; he ascended into heaven, and sitteth on the right hand of God the Father Almighty; from thence he shall come to judge the quick and the dead. I believe in the Holy Ghost; the holy catholic church; the communion of saints; the forgiveness of sins; the resurrection of the body; and the life everlasting. Amen.

OFFERTORY

In the Garden
Chancel Choir

C. Austin Miles

† THE DOXOLOGY

Hymnal #609

PRAYERS OF THE PEOPLE AND THE LORD'S PRAYER

Our Father, who art in heaven, hallowed be thy name, thy kingdom come, thy will be done, on earth as it is in heaven. Give us this day our daily bread; and forgive us our debts, as we forgive our debtors; and lead us not into temptation, but deliver us from evil. For thine is the kingdom, and the power, and the glory, forever. Amen.

† HYMN

“O Love That Will Not Let Me Go”

Hymnal #833

†CHARGE AND BLESSING

†BENEDICTION RESPONSE

“Go to the World!”
Verse 2

Hymnal #295

POSTLUDE

Gigue

Douglas E. Wagner

† In body or in spirit, please rise.

BENEDICTION RESPONSE

Go to the World!

Go to the world! Go into every place.

Go live the word of God's redeeming grace.

Go seek God's presence in each time and space.

Alleluia. Alleluia.

UPCOMING EVENTS

January

- | | | | |
|----|--|----|--|
| 21 | Adult Sunday School, 8:45 am | 24 | PW Winter Program, 1 pm & 7 pm |
| 21 | Confirmation Class, 9:00 am | 25 | Chair Exercise, 10 am |
| 21 | CM Teacher Training, following worship | 26 | Friday Bible Study, 9 am |
| 22 | Prayer Circle, 9:30 am | 28 | Annual Congregational Meeting, 9:30 am |
| 23 | Men's Bible Study, 7:30 am | 28 | Chili Cook Off, following worship |
| 23 | Yoga, 6:30 pm | 28 | Youth & Family Outing, 2:30 pm |
| 24 | PW Book Club, 9:30 am | | |

WELCOME TO ST. MARK PRESBYTERIAN CHURCH!

We are pleased to have you join us this morning. Your presence enriches both us and this experience of worship together. It is our prayer this will be a time of challenge and encouragement. Wherever you may be on your faith journey, there is a place for you to participate in our life together here at St. Mark.

TO OUR GUESTS: We hope you enjoy your visit today. Whether this is your first visit, or you have been coming to St. Mark and are considering joining the church and you would like to know more about St. Mark, we would be happy to talk with you. For more information, please contact the church office, 636-394-2233.

TO ALL: Listening devices are also available and may be picked up from the sound technician in the booth at the back of the sanctuary.

Devotional Booklets, *These Days* are available in the lobby at the 'Mark' entrance.

Please be aware that, as St. Mark works to increase safety and security, all doors to the building are locked Sunday morning once worship has begun. Those who arrive late should approach the 'Mark' door and will be admitted by a member of the Security Team.

Flowers in the Sanctuary are donated by Linda & Hugh Smith "In celebration of two wonderful grandsons, Johnathan, 23 and Fitzgerald, 8".

TO MEMBERS: Please wear your NAMETAG at church. Don't have one? Stop by the church office where you will find a form to fill out in the "Name Badge" mailbox.

WAYS TO GIVE: There are several convenient and easy ways to contribute to St. Mark:

In-person: During Sunday Worship Service

Mail: Please make check out to St. Mark Presbyterian Church and send to St. Mark Presbyterian Church, 601 Claymont Drive, Ballwin, MO 63011

Online: To donate, use the **QR Code** here to be directed to our giving page on discoverstmark.org.



PASTOR'S OFFICE HOURS

Pastor Dave is generally available in the church office Monday – Thursday from 8:15 am – 1 pm. Pastor MP is generally available in the church office on Monday, Tuesday, and Thursday from 9 am – 12 pm. Both are available at other times by appointment. Please contact the church office to confirm their availability or to schedule an appointment.



ANNUAL CONGREGATIONAL MEETING JANUARY 28, 9:30 AM

The Annual Congregational meeting will take place at 9:30 am prior to worship on January 28. Virtual participation through Zoom will be available. A Zoom invite will be sent out the week of the meeting.

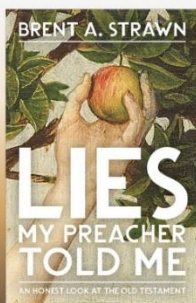
ADULT CHRISTIAN EDUCATION AT ST. MARK

ST. MARK MEN'S BIBLE STUDY

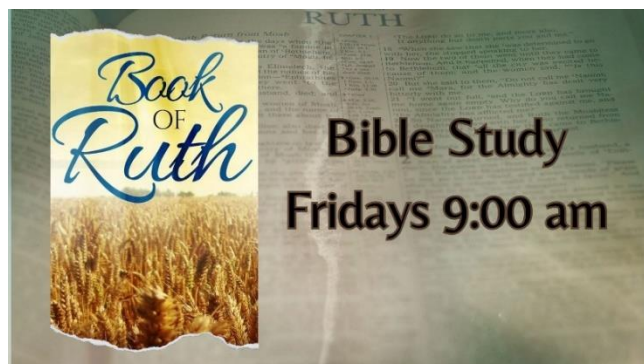
The men's bible study meets in room 102 every Tuesday at 7:30 am. We are reading, *What's So Amazing About Grace* by Philip Yancy. All men are welcome! You may contact Glen Corlett or Bruce Cranston for more information.

All-Church Book Study Arriving in January 2024

Pick up your copy today!



Join us Friday mornings from 9:00 - 10:00 am on January 5th, 12th, 19th, and 26th either in person or on Zoom. There is no book to buy. If you have any questions or want the Zoom link, contact pastor MP.



Everyone is welcome to join our Adult Sunday School Class in 2024 as we work through the book, "Lies My Preacher Told Me" together. We gather at 8:50 AM in Room 102, and it's a wonderful opportunity to ask questions, discuss God's Word, and deepen our faith. The class will explore common misconceptions about the Old Testament and ways we can (re)engage the text faithfully. There are a limited number of books available for purchase, but there are several options online. Please let Pastor Dave know if you have any questions.

WHAT'S HAPPENING WITH CHILDREN'S MINISTRY

CHILDREN'S SUNDAY SCHOOL

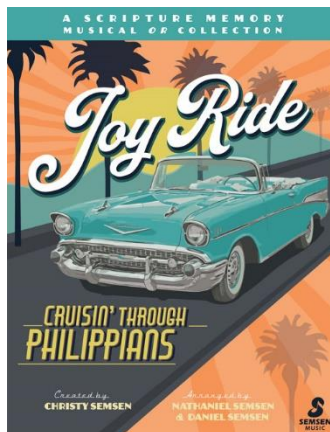
Sunday school for children PreK - 5th grade takes place during Sunday worship, immediately following the Children's Message.

NURSERY

Nursery Care, for ages 0 – 2 years, is available Sunday mornings from 8:30 am - 11:00 am

SUNDAY SCHOOL SIGN IN

Please be sure to sign in your student(s) for Sunday School! Parents will receive a card after Time With Children with a QR code for access to the sign in. Please register your student(s) so that we can contact you via text if needed.



THE KICKOFF FOR THE MUSICAL, JOY RIDE

Join us for a cruisin' good time as we take a JOY RIDE through the book of Philippians!

We are so excited about Joy Ride which will kick off on Wednesday, January 17

(with a beach party!). This is a Journey through the book of Philippians with easy scripture memorization through songs and drama, games and weekly lessons. What fun!!!! It is my hope that Joy Ride will help us to hide God's word in our hearts through these fantastic verses in Philippians!!! Then, we will share our journey with you on April 21st at 4:00 pm followed by a beach "hang-out" reception for all. Come sign up to join the St. Mark Children's choirs each week - Pre-K (ages 3-4) choir meets from 5-5:25 pm & Elem. SMP choir is for grades K-5 (5:30-6:30 pm) in Fellowship Hall. Contact Latisha Gilliland for more information.

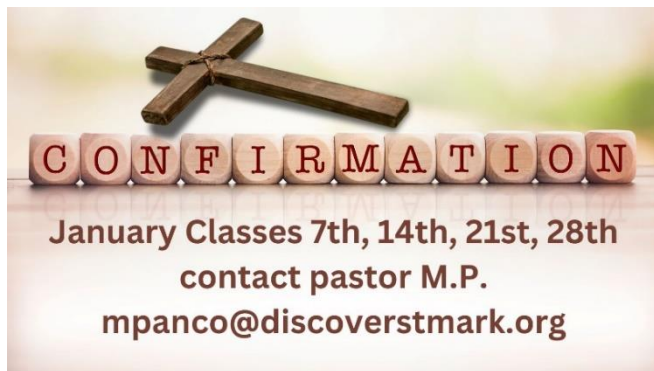


January 21st immediately following the worship service 11:15 - 12:15 (luncheon). We will be continuing our training through Ozark Christian College and January's topic is Session 4 Classroom Management by Dr. Teresa Roberts. This series of five training sessions has been so encouraging as we continue to construct the bridge between church and family in the spiritual development of our children. Please plan to join us - maybe this is your year to give of your time and gifts to the next generation!

WHAT'S HAPPENING WITH YOUTH



Youth 6th grade and up are meeting Wednesdays from 6:00 - 7:00 pm (unless noted otherwise) for food, fun, fellowship, and faith! If you have any questions, contact pastor MP or call the church office.



If you have a youth 7th grade or older who would like to explore more about what it means to be a Christian, this is the place! Students will meet weekly along with their mentors and talk about their faith and what they believe about Jesus, religion, the church, and more! Never too late to join in!

Youth Music Ensemble
Upcoming Rehearsals
January 14th, 21st
Contact Pastor MP
mpanco@discoverstmark.org



YOUTH & FAMILY OUTING!

Youth Hangout and family Polar Plunge Tubing Event! January 28th 2:30 – 4:30 pm at Hidden Valley, 17409 Hidden Valley Dr. Wildwood MO. 63025. For 2 hours of tubing the discounted rate per person is \$17. You must be at least 42" tall and be able to sit upright on an inner tube buy yourself. RSVP to Pastor MP ASAP! We will meet at Hidden Valley BUT if you need to coordinate a ride for anyone please let Pastor MP know and we will make arrangements for transportation.



This year for the Super Bowl of Caring, as a little treat to all of us, MP has agreed to dye her hair purple, orange, or blue. To make this happen we need your help. We need to collect enough money plus food in pounds to add up to 1000 total. So, the question is, are you ready to make this happen?



YOUTH TRIVIA NIGHT

On last summer's mission trip, the St. Mark Youth spent a week at a youth camp in the mountains of Puerto Rico making improvements to the camp facilities. This year our youth will travel to the Gulf Coast, helping with hurricane related clean up. In order to fund this trip, the youth are hosting a trivia night on Saturday, Feb 24, 2024. The doors will open at 5:00 pm and trivia will begin at 6:00 pm. The evening includes 10 rounds of trivia, a silent auction, and games & prizes. Register now! The price per table of 8 is \$200. Registrations forms are on the youth table in the narthex or go to discoverstmark.org to register and pay online. Please contact Heather Neal for more information.

HELP ST. MARK YOUTH SPRING INTO SERVICE!

You can donate to the St Mark youth group in many ways. Attend the trivia night on Feb 24th, write a check, or donate an item for the silent auction on trivia night. If you own or manage a business, a gift certificate would be welcome. If you have season tickets to the Cardinals, Blues, St Louis City SC, the Battlehawks, the Fox Theatre, the MUNY, or any other venue, you can donate your tickets for an event. Donations of bottled water and cans of soda are also needed. Please contact Heather Neal for more information.

MISSION AT ST. MARK



COLLECTION WILL CONTINUE THROUGH END OF JANUARY

New and gently used clean winter coats and clothing are needed for men, women, and kids, all sizes, and styles. There is a desperate need for XL adult coats, hats, and gloves. Many people in our region lack enough warm clothing to stay protected throughout winter. Please place your donations in the foyer outside the church office.

JANUARY FOOD PANTRY CRITICAL NEEDS

- Chili
- Spinach/Greens
- Beans
- Fruit
- Multi-purpose Cleaner*
- Dish Soap*



All year long, we collect food and hygiene items for Circle of Concern and Isaiah 58 Ministries.

*Non-food products cannot be purchased with food stamps. Please place donations on the table in the pastors' hallway.

SAVE THE DATE!



DISCOVER MISSION SUNDAY

FEBRUARY 11, 2024

WHAT'S HAPPENING WITH PRESBYTERIAN WOMEN



Book club will meet Wednesday, January 24, at 9:30 am. The book for this month's discussion is A Pearl in the Storm by Tori Murden McClure. Linda will lead the discussion. There is an option to participate virtually as well as in person. Please contact Judy Richardson for a Zoom invite to participate virtually.



Grief is a journey we are never prepared to take. Have you lost a spouse, family member, or close friend? Are you finding it difficult to talk about your loss? Do you feel nobody understands? GriefShare is a place you can come with caring compassionate people to walk with you on your grief journey. Be with people who are experiencing similar feelings. Let us help you. GriefShare meets weekly for 13 weeks. It is very helpful, but not required to attend all the sessions.

Our next session starts Tuesday February 13, 6:30 – 8:30 pm. The book fee is \$20. For information, contact Debbie Hames.



THE PROPERTY COMMITTEE IS SEEKING VOLUNTEERS!

St. Mark's Property Committee is actively seeking new members to help us with maintenance of the building, preschool and grounds! We need your time and talents.

Would you be interested in gardening, painting, electrical or minor construction?

Feel free to reach out to Keith Monteith, David Sutch, Mike Vroman, Jean Steward or any other Property Committee members to understand how you can help.



NURSERY WORKER POSITION

We are looking for energetic person or persons to provide childcare for children

ages 2 months to 3 years on Sunday mornings from 8:30 – 11:15 am and Wednesday evenings from 6 – 8 pm. Please contact Latisha Gilliland for more information.



CHILI COOK OFF

The chili cook off will be Sunday, January 28th immediately following the 10 am church service. If you are interested in competing in the cook off:

1. Please sign up at the Welcome Center or send an email to Judy Richardson.
2. Prepare a crock pot of your famous chili for others to sample!
3. On the 28th please be at your table to give out sample sizes to the tasters and possibly with the "prized" trophy that has been handed down for several years. Please bring extension cords.

If you would like to be a taster just show up with a hankering for some chili! We will have lots of chili to sample, hot dogs, cookies and drinks for everyone! We will be voting with our dollar bills, so bring a few ones to cast your vote with. The chef with the most \$\$\$ in their container after the voting concludes will be the winner! The proceeds go to Claymont Elementary School to help pay off lunch accounts. Hope to see you at this event!

SCOUT SUNDAY 2024



Calling all Scouts, Cub Scouts, Girl Scouts, Adventure Guides & Princesses, and Adult Scouters of all ages!

If you participate in scouting, or a similar program, Sunday, February 4, St. Mark will celebrate Scout Sunday 2024. Whether your unit is sponsored by St. Mark or not, plan to show off your unit pride by coming to church in your best dress uniform. Come early, 9-9:15 am, and help as an Usher or Greeter



CLAYMONT PRESCHOOL AT ST. MARK 2024-25 REGISTRATION

It's preschool registration time! Parents and grandparents of St. Mark preschool aged children are offered priority registration from Friday, January 12th to January 16th.

Claymont Preschool enjoys a wonderful reputation for excellent, caring teachers and Kindergarten readiness. Our reputation does cause some classes to fill quickly, so we hope St. Mark members will take advantage of this early registration period.

Our preschool here at St. Mark has classrooms for 3 different age groups: 2-year olds, 3-year olds, and Pre-Kindergarten children. Our school hours are 9:00 to 12:00 with an extended day option until 1:30 for the older children.

Community registration will begin Monday, January 22nd. If you have a neighbor with a preschool aged child, we hope you will pass our name along to them!

Please call or email Susan Talley at 636-386-5437 or STalley@DiscoverStMark.org for more information. Our registration form and other Missouri State required forms are available at DiscoverStMark.org.

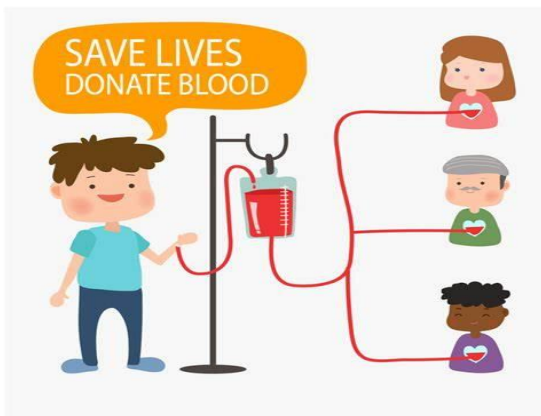


**LIFE IS FRAGILE.
HANDLE WITH
PRAYER**



PRAYER CIRCLE

The Prayer Circle meets weekly on most Mondays at 9:30 am in Room 104. Weekly prayer lists are available every Sunday at the Welcome Center and in the Prayer Circle mailbox in the church office throughout the week during regular office hours.



BLOOD DRIVE

Sunday, February 25, 8:30 am – 1:30 pm

Just one blood donation can help save up to three (3) lives! For years St. Mark has participated in this very valuable community service. For donors who regularly give blood, please add this date and time to your schedule by signing up today. For members & community residents who have been thinking about giving for the first time, let this February 25th be the beginning of a new habit in your life. Sign up at <http://www.redcrossblood.org/Donate/Blood> and enter: Saintmarkpres.

A member of your community may be the one who receives your blood because of cancer, transplant surgery, other life-saving surgeries, genetic blood disorders, various illnesses & a multitude of various accidents. **BE THE ONE WHO BRINGS HOPE & HEALING TO THOSE PATIENTS IN NEED.**

Go Getters Luncheon February 13 @ 12 pm

The luncheon will be held at

Candicci's Restaurant

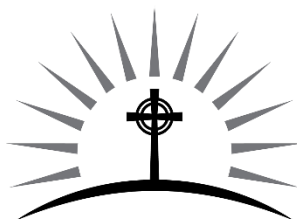
100 Holloway Rd, Ballwin

**Please invite a friend and join us for food,
fun, and fellowship.**

**Please let Jan Graves or Judy Richardson
know of your plans to attend.**

This image shows a blank sheet of white paper with horizontal ruling lines. The lines are evenly spaced and run across the width of the page. There are no margins, text, or other markings on the paper.

Pastor: Rev. Dr. J. David Burgess
Associate Pastor: Rev. MP Panco
Dir. of Children's Ministry: Latisha Gilliland
Dir. of Claymont Preschool: Susan Talley



ST. MARK
PRESBYTERIAN CHURCH
PC(USA) • BALLWIN, MO

601 Claymont Drive
Ballwin, MO 63011
(636)394-2233
discoverstmark.org

Dir. of Music: Ethan Forte
Sunday Accompanist & Organist: Jee-Hye Lee
Special Music: Chancel Choir
Sunday Liturgist: Clay Douglas