



ST. MARK  
PRESBYTERIAN CHURCH  
PC(USA) · BALLWIN, MO

January 28, 2024  
Worship Bulletin

# ORDER OF WORSHIP

## CENTERING PRAYER

Jonah 2:2-9

"I called to the Lord out of my distress, and he answered me; out of the belly of Sheol I cried, and you heard my voice. You cast me into the deep, into the heart of the seas, and the flood surrounded me; all your waves and your billows passed over me. Then I said, "I am driven away from your sight; how shall I look again upon your holy temple?" The waters closed in over me; the deep surrounded me; weeds were wrapped around my head at the roots of the mountains. I went down to the land whose bars closed upon me for ever; yet you brought up my life from the Pit, O Lord my God. As my life was ebbing away, I remembered the Lord; and my prayer came to you, into your holy temple. Those who worship vain idols forsake their true loyalty. But I with the voice of thanksgiving will sacrifice to you; what I have vowed I will pay. Deliverance belongs to the Lord!"

## PRELUDE

*Praise the Lord, the Almighty with Worship the King*

Marianne Kim

## WELCOME AND ANNOUNCEMENTS

## CALL TO WORSHIP

Psalm 30

I will extol you, O LORD, for you have drawn me up,  
and did not let my foes rejoice over me.

**O LORD my God, I cried to you for help, and you healed me.**

O LORD, you brought up my soul from Sheol,  
restored me to life from among those gone down to the Pit.

**Sing praises to the LORD, O you his faithful ones,  
and give thanks to his holy name.**

For his anger is but for a moment; his favour is for a lifetime.

**Weeping may linger for the night,  
but joy comes in the morning.**

"Hear, O LORD, and be gracious unto us!

O LORD, be our helper!"

## † HYMN

**"God of the Sparrow"**

Hymnal #22

## PRAYER OF CONFESSION

**Forgiving God, we repent of all the ways we turn from you. You call, but we do not listen; you show us your path, but we prefer our own way. You pardon our sins, but we cannot forgive our enemies. You provide abundant blessings, but we remain stuck in anger, swallowed up by our grievances. Forgive us, heal us, and lead us back to you, that we might show mercy to others. We continue to pray in Jesus' name.**

(Silent Confession)

## ASSURANCE OF PARDON

## † SHARING THE PEACE OF CHRIST

The peace of Christ be with you.

**And also with you.**

## † GLORY BE TO THE FATHER

Hymnal #58 I

## TIME WITH CHILDREN

## † HYMN

**"I Will Call upon the Lord"**

Hymnal #62 I

Sing Twice

SCRIPTURE

Jonah 3:1-4:1

SERMON

“Lies My Preacher Told Me: Relentless”

Rev. Dr. Dave Burgess

† **AFFIRMATION OF FAITH**

**Apostles’ Creed**

**I believe in God, the Father almighty, Maker of heaven and earth, and in Jesus Christ his only Son, our Lord; who was conceived by the Holy Ghost, born of the Virgin Mary, suffered under Pontius Pilate, was crucified, dead, and buried; he descended into hell; the third day he rose again from the dead; he ascended into heaven, and sitteth on the right hand of God the Father Almighty; from thence he shall come to judge the quick and the dead. I believe in the Holy Ghost; the holy catholic church; the communion of saints; the forgiveness of sins; the resurrection of the body; and the life everlasting. Amen.**

OFFERTORY

Shepherd of My Life  
Chancel Choir

Text by Mary Martin  
Music by Joseph Martin

† **THE DOXOLOGY**

**Hymnal #609**

**PRAYERS OF THE PEOPLE AND THE LORD’S PRAYER**

**Our Father, who art in heaven, hallowed be thy name, thy kingdom come, thy will be done, on earth as it is in heaven. Give us this day our daily bread; and forgive us our debts, as we forgive our debtors; and lead us not into temptation, but deliver us from evil. For thine is the kingdom, and the power, and the glory, forever. Amen.**

† **HYMN**

**“Come! Live in the Light!”**

**Hymnal #749**

† **CHARGE AND BLESSING**

† **BENEDICTION RESPONSE**

**“Go to the World!”  
Verse 2**

**Hymnal #295**

POSTLUDE

*Chant Héroïque*

George Blake

† *In body or in spirit, please rise.*

**UPCOMING EVENTS**

**January**

**28** Adult Sunday School, 8:45 am

**28** Confirmation Class, 8:45 am

**28** Annual Congregational Meeting, 9:30 am

**28** Chili Cook Off, following worship

**28** Youth & Family Outing, 2:30 pm

**29** Prayer Circle, 9:30 am

**30** Men’s Bible Study, 7:30 am

**30** Yoga, 6:30 pm

**February**

**1** Chair Exercise, 10 am

**2** Friday Bible Study, 9 am

**4** Scout Sunday

**9-10** PW Women’s Retreat

**11** Discover Mission Sunday

**11** Souper Bowl of Caring

**11** Super Bowl Party at the Burgess, 5 pm

**13** Go Getter Luncheon, 12 pm

**13** Grief Share, 6:30 pm

**14** Ash Wednesday, 7 pm

**24** Trivia Night, 5 pm

**25** Blood Drive, 8:30 am

## WELCOME TO ST. MARK PRESBYTERIAN CHURCH!

We are pleased to have you join us this morning. Your presence enriches both us and this experience of worship together. It is our prayer this will be a time of challenge and encouragement. Wherever you may be on your faith journey, there is a place for you to participate in our life together here at St. Mark.

**TO OUR GUESTS:** We hope you enjoy your visit today. Whether this is your first visit, or you have been coming to St. Mark and are considering joining the church and you would like to know more about St. Mark, we would be happy to talk with you. For more information, please contact the church office, 636-394-2233.

**TO ALL:** Listening devices are also available and may be picked up from the sound technician in the booth at the back of the sanctuary.

**Devotional Booklets,** *These Days* are available in the lobby at the 'Mark' entrance.

**Please be aware** that, as St. Mark works to increase safety and security, all doors to the building are locked Sunday morning once worship has begun. Those who arrive late should approach the 'Mark' door and will be admitted by a member of the Security Team.

**Flowers in the Sanctuary** are donated by Linda & Hugh Smith "In celebration of two wonderful grandsons, Johnathan, 23 and Fitzgerald, 8".

**TO MEMBERS:** Please wear your NAMETAG at church. Don't have one? Stop by the church office where you will find a form to fill out in the "Name Badge" mailbox.

**WAYS TO GIVE:** There are several convenient and easy ways to contribute to St. Mark:

**In-person:** During Sunday Worship Service

**Mail:** Please make check out to St. Mark Presbyterian Church and send to St. Mark Presbyterian Church, 601 Claymont Drive, Ballwin, MO 63011

**Online:** To donate, use the **QR Code** here to be directed to our giving page on [discoverstmark.org](https://discoverstmark.org).



## PASTOR'S OFFICE HOURS

Pastor Dave is generally available in the church office Monday – Thursday from 8:15 am – 1 pm. Pastor MP is generally available in the church office on Monday, Tuesday, and Thursday from 9 am – 12 pm. Both are available at other times by appointment. Please contact the church office to confirm their availability or to schedule an appointment.



## THE CHILI COOK OFF IS TODAY!

Join us immediately following worship service!

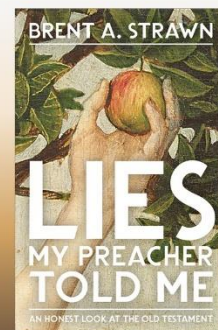
## ADULT CHRISTIAN EDUCATION AT ST. MARK

### ST. MARK MEN'S BIBLE STUDY

The men's bible study meets in room 102 every Tuesday at 7:30 am. We are reading, *What's So Amazing About Grace* by Philip Yancy. All men are welcome! You may contact Glen Corlett or Bruce Cranston for more information.

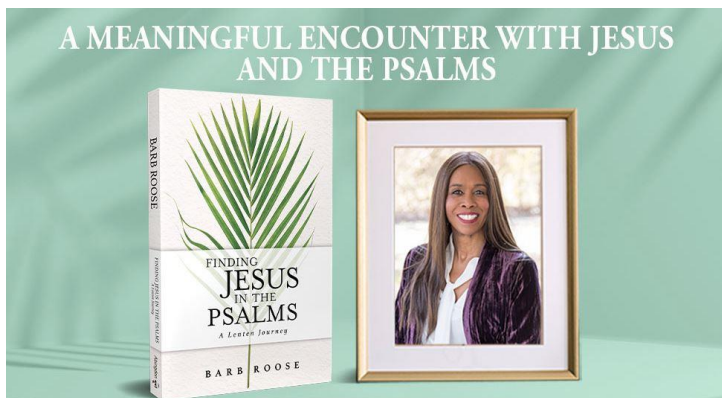
### All-Church Book Study Arriving in January 2024

Pick up your copy today!



Everyone is welcome to join our Adult Sunday School Class in 2024 as we work through the book, "Lies My Preacher Told Me" together. We gather at 8:50 AM in Room 102, and it's a wonderful opportunity to ask questions, discuss God's Word, and deepen our faith. The class will explore common misconceptions about the Old Testament and ways we can (re)engage the text faithfully. Please let Pastor Dave know if you have any questions.

## FRIDAY BIBLE STUDY



Upcoming Friday morning Lenten study February 2<sup>nd</sup>, 9<sup>th</sup>, 16<sup>th</sup>, March 1<sup>st</sup>, 8<sup>th</sup>, 22<sup>nd</sup>

**Join Bible study author Barb Roose in a meaningful encounter with the Psalms through the season of Lent.**

Barb Roose guides the reader through a meaningful encounter with the Psalms through the season of Lent. Combining an interpretation of the Psalms with real life stories, the study moves through the familiar words of Psalm 23 toward the painful cries of Psalm 22 uttered by Jesus on the cross. The study includes reflections on the life of King David and the original context of the writings, along with connections between the psalms and the life and death of Jesus the Messiah.

## WHAT'S HAPPENING WITH CHILDREN'S MINISTRY

### CHILDREN'S SUNDAY SCHOOL

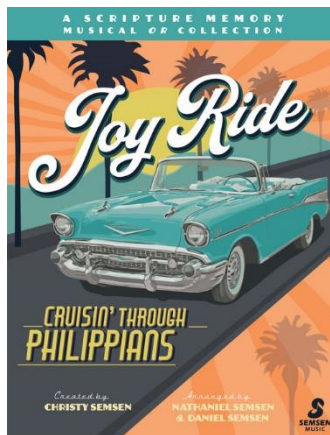
Sunday school for children PreK - 5<sup>th</sup> grade takes place during Sunday worship, immediately following the Children's Message.

### NURSERY

Nursery Care, for ages 0 – 2 years, is available Sunday mornings from 8:30 am - 11:00 am

### SUNDAY SCHOOL SIGN IN

Please be sure to sign in your student(s) for Sunday School! Parents will receive a card after Time With Children with a QR code for access to the sign in. Please register your student(s) so that we can contact you via text if needed.



## THE MUSICAL, JOY RIDE

We are so excited about the journey through the book of Philippians with easy scripture memorization through songs and drama, games and weekly lessons. What fun!!!! The St. Mark Children's choirs meet each week - Pre-K (ages 3-

4) from 5 - 5:25 pm and Elementary choir (grades K-5) from 5:30 - 6:30 pm in Fellowship Hall. We will share our journey with you on April 21<sup>th</sup> at 4:00 pm followed by a beach "hang-out" reception for all. Contact Latisha Gilliland for more information.

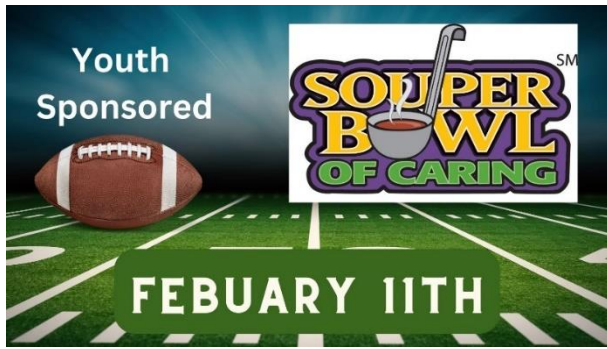
## WHAT'S HAPPENING WITH YOUTH



Youth 6<sup>th</sup> grade and up are meeting Wednesdays from 6:00 - 7:00 pm (unless noted otherwise) for food, fun, fellowship, and faith! If you have any questions, contact Pastor MP or call the church office.



Students 7<sup>th</sup> grade and older meet weekly, with their mentors, to talk about their faith and what they believe about Jesus, religion, the church, and more. It's never too late to join! Contact Pastor MP for more information.



This year for the Super Bowl of Caring, as a little treat to all of us, MP has agreed to dye her hair purple, orange, or blue. To make this happen we need your help. We need to collect enough money plus food in pounds to add up to 1,000 total. So, the question is, are you ready to make this happen?



### YOUTH TRIVIA NIGHT

This year our youth will travel to the Gulf Coast, helping with hurricane related clean up. In order to fund this trip, the youth are hosting a Trivia Night on Saturday, Feb 24, 2024. The doors will open at 5:00 pm and trivia will begin at 6:00 pm. The evening includes 10 rounds of trivia, a silent auction, and games & prizes. Register now! The price per table of 8 is \$200. Registrations forms are on the youth table in the narthex or go to [discoverstmark.org](http://discoverstmark.org) to register and pay online.

We are currently seeking donations of gift cards, tickets to local sporting events, theater shows, or music venues for silent auction baskets. Donations of bottled water and cans of soda are also needed for the event. Please contact Heather Neal for more information.

### MISSION AT ST. MARK

New and gently used clean winter coats and cold weather clothing are still needed - especially for adult XL and up. Collection will continue through February. Please place your donations in the foyer outside the church office.



### JANUARY FOOD PANTRY CRITICAL NEEDS



- Chili
- Spinach/Greens
- Beans
- Fruit
- Multi-purpose Cleaner\*
- Dish Soap\*

All year long, we collect food and hygiene items for Circle of Concern and Isaiah 58 Ministries. \*Non-food products cannot be purchased with food stamps. Please place donations on the table in the pastors' hallway.

### EQUAL EXCHANGE / FAIRLY TRADED

February 11 in the Narthex



Through fair trade, small-scale farmers are better able to support their families and stay on their land with better income and support from their co-operatives. St. Mark supports this mission to build long-term trade partnerships that are

economically just and environmentally sustainable, and to foster mutually beneficial relationships between small farmers and consumers (that's us!).  
*Cash, Credit, Debit, Mobile Payments Accepted.*



## WHAT'S HAPPENING WITH PRESBYTERIAN WOMEN

### BOOK CLUB

Book club will meet Wednesday, February 28, at 9:30 am. The book for this month's discussion is Her Hidden Genius by Marie Benedict. There is an option to participate virtually as well as in person. Please contact Judy Richardson for a Zoom invite to participate virtually.



Grief is a journey we are never prepared to take. Have you lost a spouse, family member, or close friend? Are you finding it difficult to talk about your loss? Do you feel nobody understands? GriefShare is a place you can come with caring compassionate people to walk with you on your grief journey. Be with people who are experiencing similar feelings. Let us help you. GriefShare meets weekly for 13 weeks. It is very helpful, but not required to attend all the sessions.

Our next session starts Tuesday February 13, 6:30 – 8:30 pm. The book fee is \$20. For information, contact Debbie Hames.



### SCOUT SUNDAY 2024

Calling all Scouts, Cub Scouts, Girl Scouts, Adventure Guides & Princesses, and Adult Scouters of all ages!

If you participate in scouting, or a similar program, Sunday, February 4, St. Mark will celebrate Scout Sunday 2024. Whether your unit is sponsored by St. Mark or not, plan to show off your unit pride by coming to church in your best dress uniform. Come early, 9-9:15 am, and help as an Usher or Greeter



## Go Getters Luncheon February 13 @ 12 pm

The luncheon will be held at  
**Candicci's Restaurant**  
100 Holloway Rd, Ballwin  
Please invite a friend and join us for food,  
fun, and fellowship.  
Please let Jan Graves or Judy Richardson  
know of your plans to attend.

### BLOOD DRIVE

In about an hour, give blood & help save lives



Registration Health check Donation Refreshments

American Red Cross Schedule your appointment  
RedCrossBlood.org

### Sunday, February 25, 8:30 am – 1:30 pm

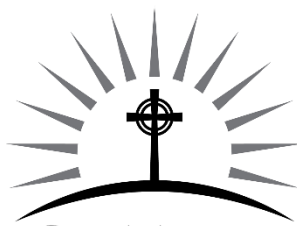
A shortage of blood can cause delays in much needed surgery and lifesaving treatments causing a reduction in the quality of life for a loved one; a dear friend or a member of your community.

There's a **VERY REAL** need for donors. Please sign up today!



The Youth Group and their families are invited to enjoy the Super Bowl at the Burgess House on February 11 from 5 - 9 pm. Bring a friend, a favorite appetizer to share, and some football fever as we enjoy the game, the commercials, and this time together. Everyone is welcome to this annual event!

*Pastor:* Rev. Dr. J. David Burgess  
*Associate Pastor:* Rev. MP Panco  
*Dir. of Children's Ministry:* Latisha Gilliland  
*Dir. of Claymont Preschool:* Susan Talley



**ST. MARK**  
PRESBYTERIAN CHURCH  
PC(USA) · BALLWIN, MO

601 Claymont Drive  
Ballwin, MO 63011  
(636)394-2233  
[discoverstmark.org](http://discoverstmark.org)

*Dir. of Music:* Ethan Forte  
*Sunday Accompanist & Organist:* Jee-Hye Lee  
*Special Music:* Chancel Choir  
*Sunday Liturgist:* Addie Pfarr